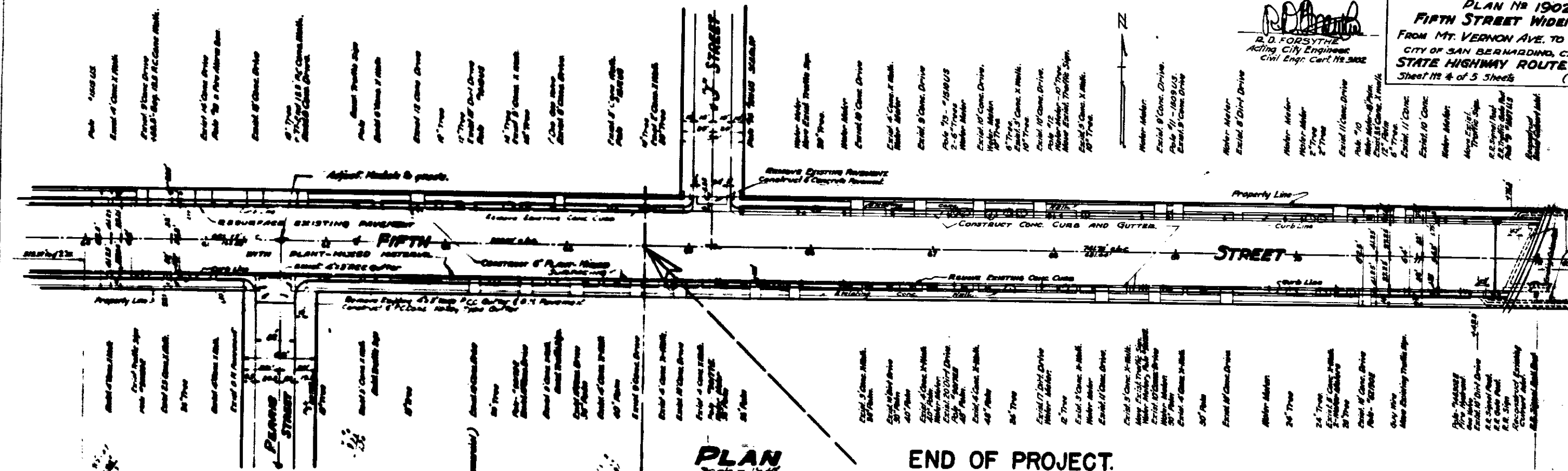


**PLAN No 1902**  
**FIFTH STREET WIDENING**  
 FROM MT. VERNON AVE. TO J  
 CITY OF SAN BERNARDINO, CALIF.  
 STATE HIGHWAY ROUTE 15  
 Sheet 119 4 of 5 Sheets (1950)

*R.D. Forsythe*  
**R. D. FORSYTHE**  
 Acting City Engineer  
 Civil Eng. Cert. No. 2902



**PLAN**  
 Scale 1/4" = 1'-0"

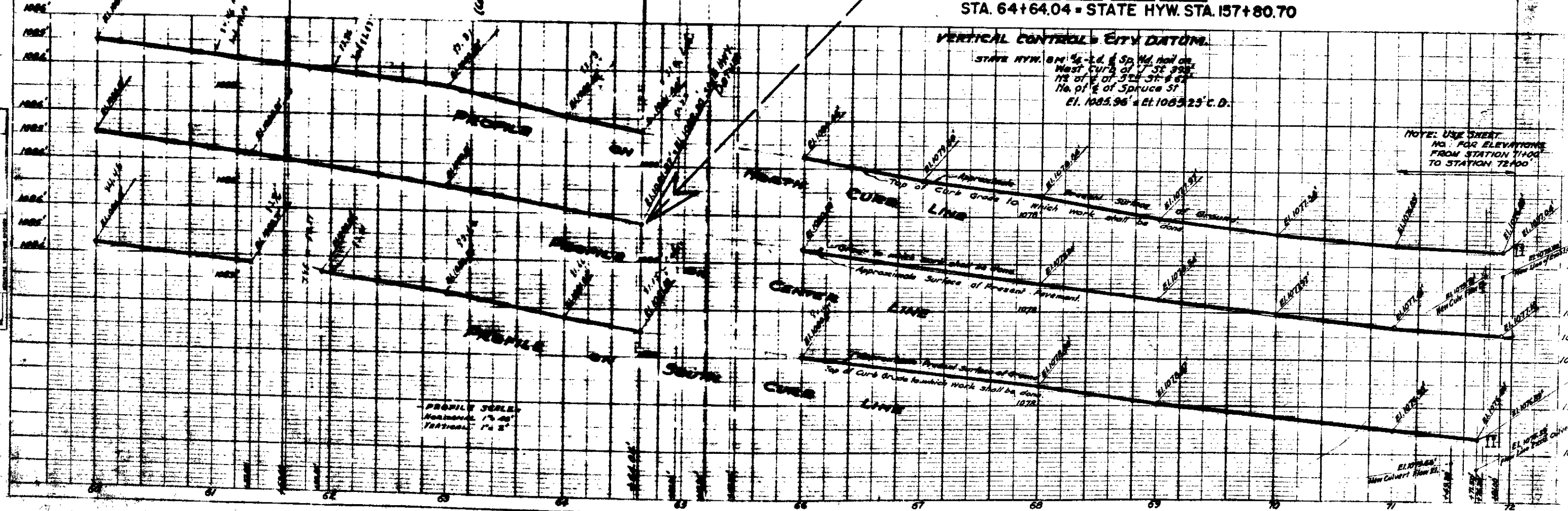
**END OF PROJECT.**

STA. 64+64.04 = STATE HWY. STA. 157+80.70

**VERTICAL CONTROL - CITY DATUM.**

STATE HWY. ON 1/4" = 1'-0" & Sp. No. 101 on West curb of J St. 35' N. of 1/4" of J St. 35' N. of 1/4" of Spruce St. El. 1085.96' & El. 1085.25' C. D.

NOTE: USE SHEET NO. FOR ELEVATIONS FROM STATION 1100 TO STATION 7200



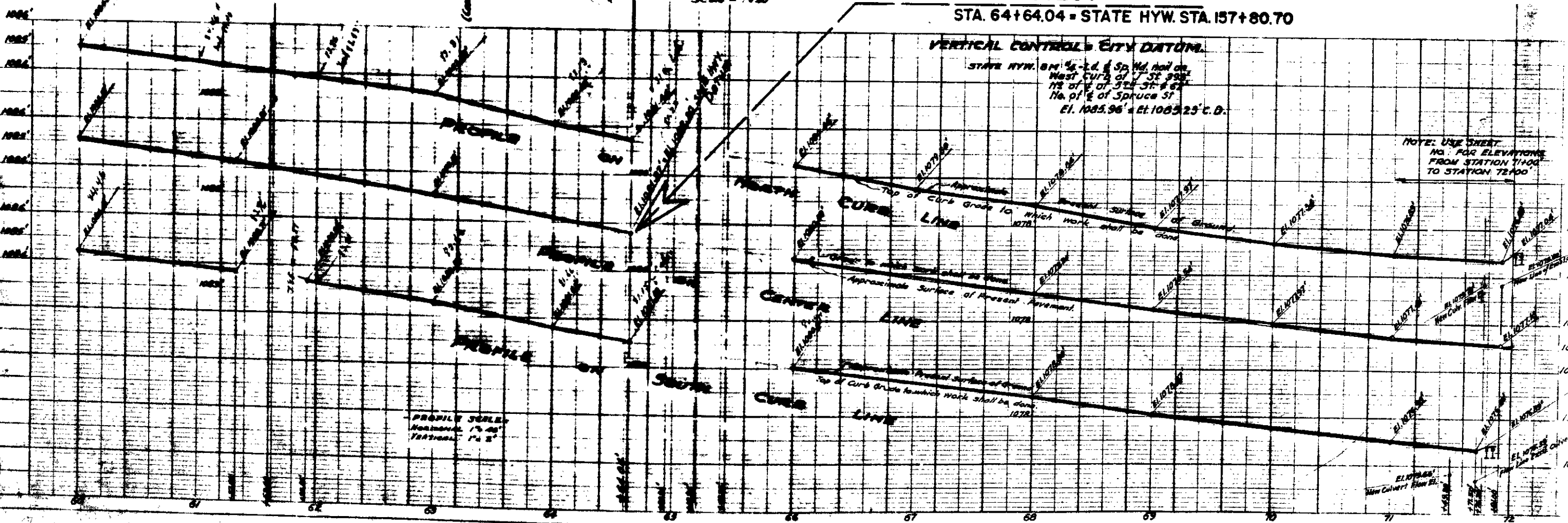
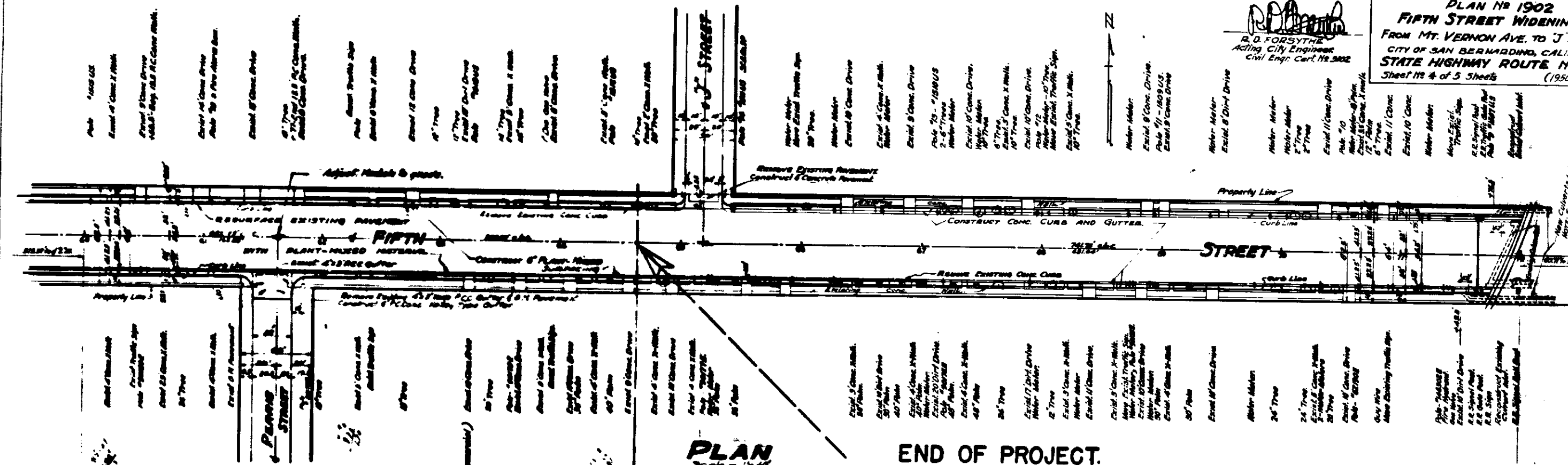
**PROFILE SCALE**  
 Horizontal 1" = 40'  
 Vertical 1" = 5'

FILE NO. 157-100-119  
 SHEET NO. 119

PROFILE SCALE  
 Horizontal 1" = 40'  
 Vertical 1" = 5'

**PLAN No 1902**  
**FIFTH STREET WIDENING**  
 FROM MT. VERNON AVE. TO J  
 CITY OF SAN BERNARDINO, CALIF.  
**STATE HIGHWAY ROUTE No 157**  
 Sheet No 4 of 5 Sheets (1950)

**R. D. FORSYTHE**  
 Acting City Engineer  
 Civil Eng. Cert. No 2902



PLAN

DATE	10/10/50
BY	R.D.F.
CHECKED BY	R.D.F.
APPROVED BY	R.D.F.

PROFILE

DATE	10/10/50
BY	R.D.F.
CHECKED BY	R.D.F.
APPROVED BY	R.D.F.

**PROFILE SCALE**  
 Horizontal 1" = 40'  
 Vertical 1" = 5'

**NOTE: USE SHEET NO. FOR ELEVATIONS FROM STATION 1100 TO STATION 1200**